

## Importing new sensors files to I-Test/I-Test-Manager

**Note.** These instructions assume the user has already received the sensor files.

1. Open I-Test manager:



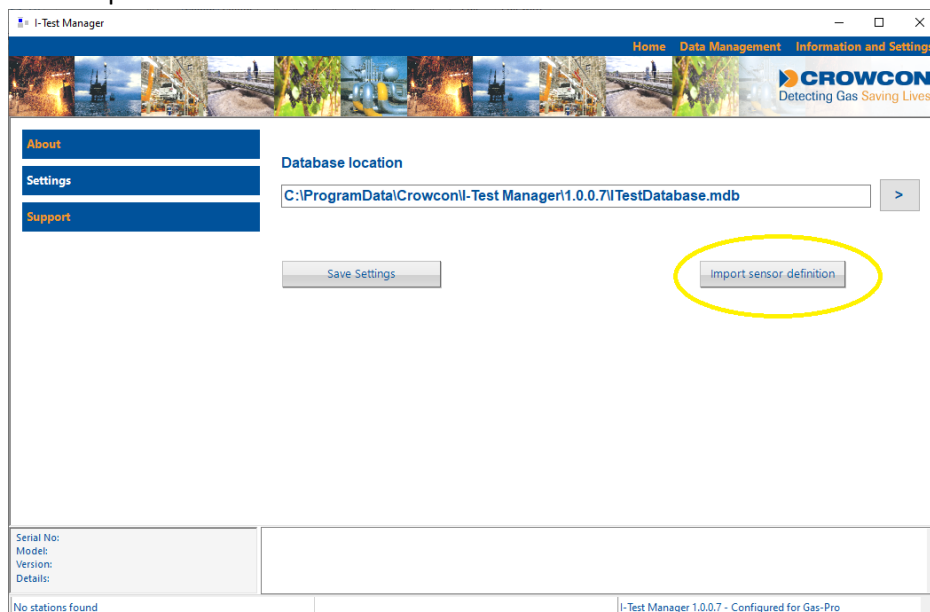
2. Click on 'Information and Settings' in the top right corner of the application:



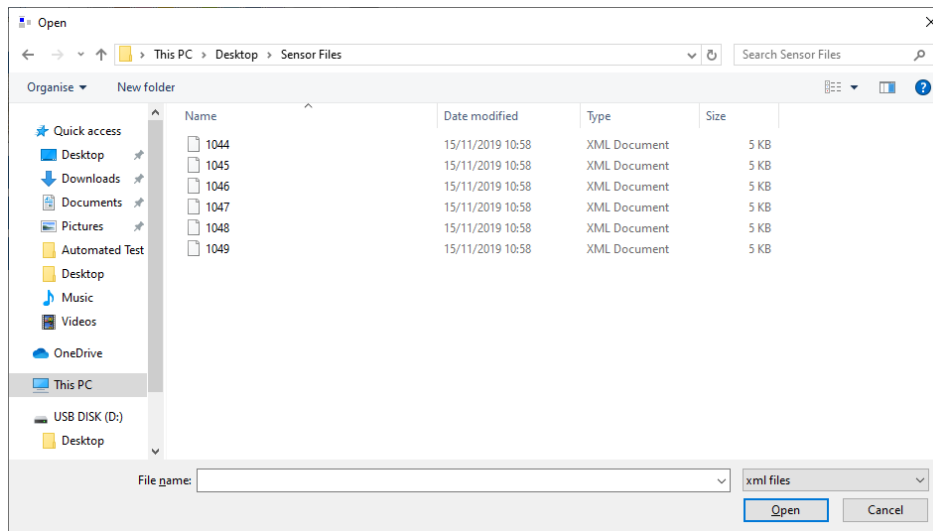
3. Click on the 'Settings':



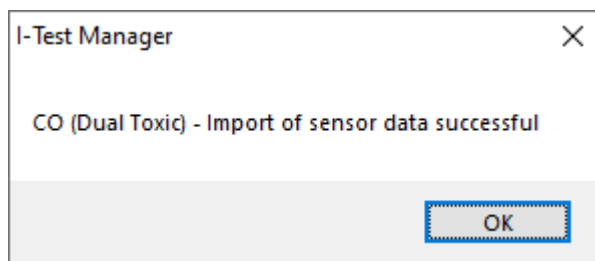
4. Click 'Import sensor definition':



5. A 'file selection' popup window should appear, use this to navigate to the folder that contains the new sensor files:



6. Select and open the first sensor file to import, a popup message should then appear indicating the sensor file has been successfully imported:



7. Repeat steps 4 to 6. for all remaining sensor files.

**Note.** The above process will have imported the new sensor files to I-Test Manager. For the new sensor files to be downloaded to the I-Test device, the inlet settings must now be saved to the I-Test at least once in the usual way as shown below:

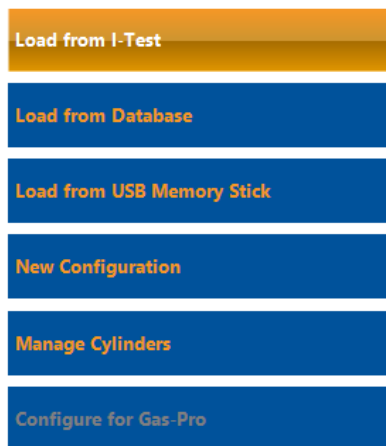
8. Connect the I-Test to the PC and ensure I-Test Manager identifies the connected I-Test (as shown in the bottom left of the application):



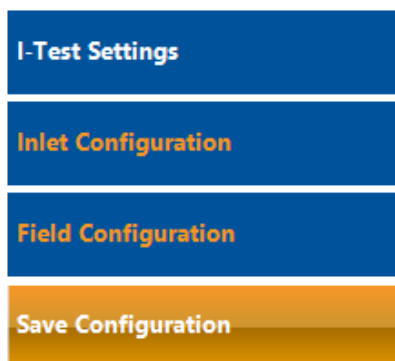
9. Click on 'Home' in the top right of the application:



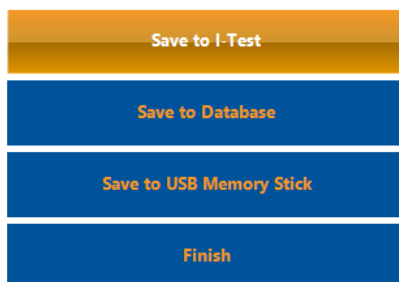
10. Click 'Load from I-Test':



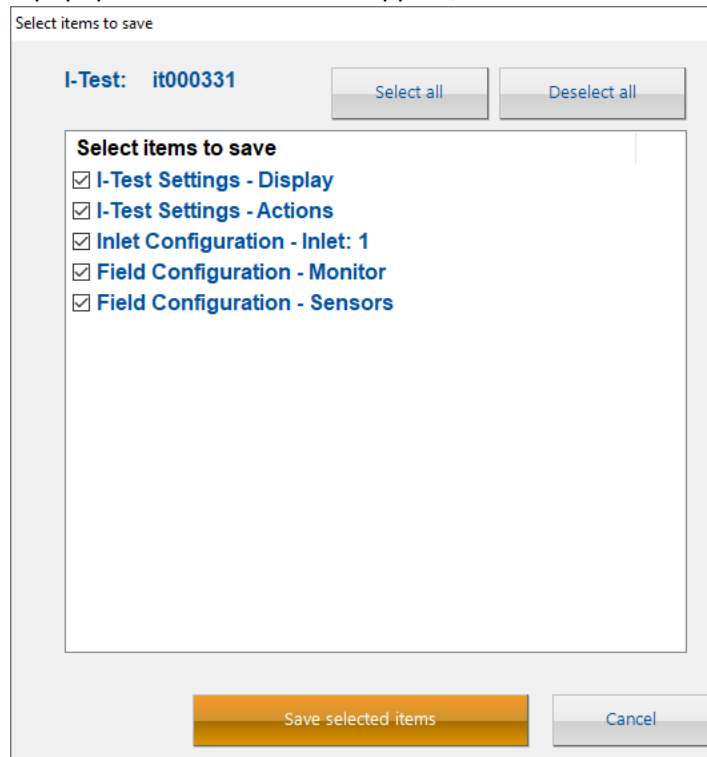
11. Once the configuration has been loaded from the I-Test, on the following screen click 'Save Configuration':



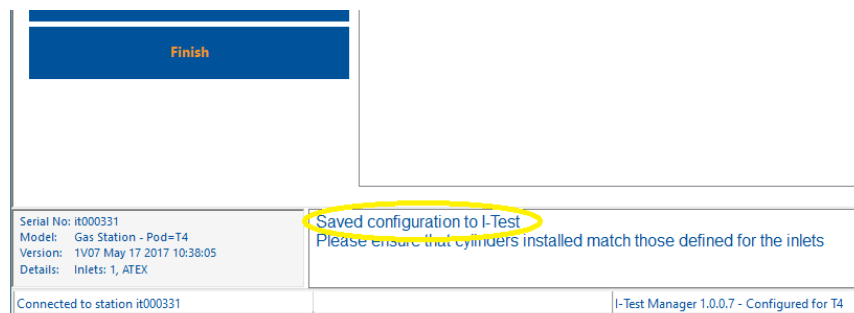
12. Then click 'Save to I-Test':



13. A popup window should then appear, click 'Save selected items' (leaving all items selected):



14. I-Test manager will then proceed to download the configuration (including the new sensor files). Wait until the operation is complete; a notification will be shown in the status window at the bottom of the application confirming this:



The new sensor files will now have been downloaded to the I-Test device.

End of document.